

# Archer Carbon Management

Today's organizations face mounting pressure to track and report their environmental impact. Consumers are increasingly eco-conscious, and regulations like the European Union Corporate Sustainability Reporting Directive (CSRD) and California's Climate Corporate Data Accountability Act require reporting on the organization's scope 1, 2, and 3 emissions. However, accurately measuring your carbon footprint can be a complex and time-consuming challenge.

Juggling disparate data sources, from energy bills to travel logs and waste management records are a major hurdle. Manual calculations are prone to errors and inconsistencies, hindering progress toward sustainability goals. Additionally, setting science-based reduction targets requires expertise and specialized knowledge. This is where Archer Carbon Management can make a difference.

## Your Comprehensive Emissions Reporting Solution

Archer Carbon Management empowers organizations to overcome these challenges with a user-friendly software solution designed to simplify and streamline sustainability and emissions reporting.

- **Effortless Data Collection and Management.** Archer Carbon Management integrates with Archer ESG Management to efficiently collect data on business activities and expenditures to calculate their carbon footprint. The out-of-the-box integration allows for seamless data input and output for fast and streamlined carbon management reporting.
- **Automated Emissions Calculation and Reporting.** Leverage the Greenhouse Gas (GHG) protocol-aligned platform to calculate your carbon footprint across your entire enterprise and supply chain. Identify "carbon hotspots"- areas with the largest emissions that can guide the organization's carbon reduction strategy. Generate comprehensive reports that meet regulatory requirements and provide valuable insights into your environmental impact.
- **Actionable Insights and Strategic Planning:** Gain a deeper understanding of your environmental impact with intuitive dashboards and reports. Leverage analytics for effective decision-making, strategic planning, and risk management.

Additional target setting advisory services are available to organizations for Science Based Targets (SBT) and advancing your Net Zero goals.

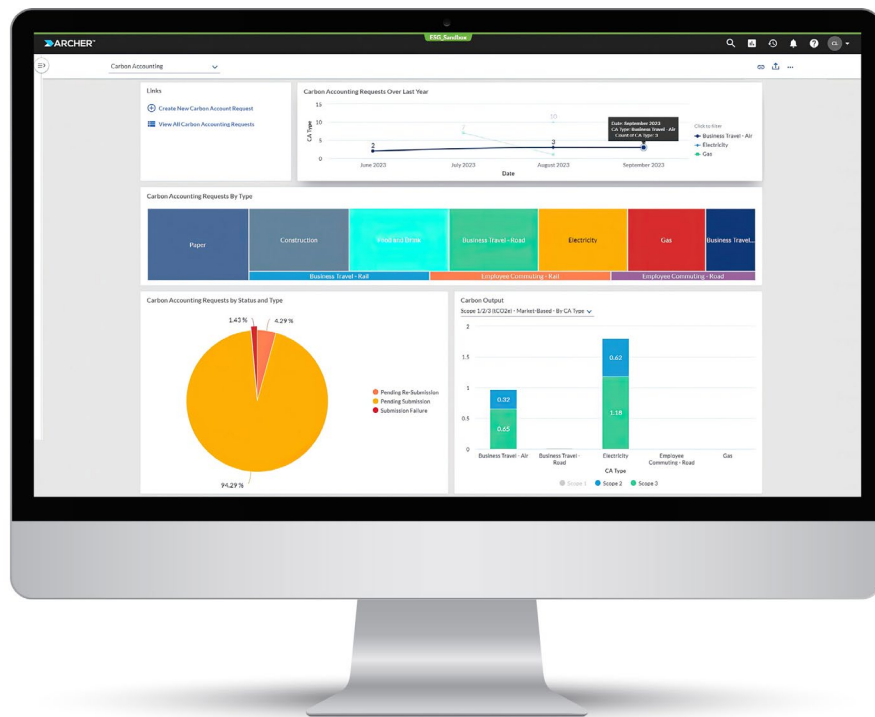
Archer Carbon Management provides a comprehensive solution for organizations aiming to accurately measure and manage their carbon emissions amidst growing regulatory pressure and consumer demand for sustainability. By offering automated calculation and reporting tools, Archer Carbon Management allows organizations to evaluate their carbon footprint and establish emission-reduction targets to improve organizational resiliency and sustainability.

## Features

- Measure scope 1, 2, & 3 carbon emissions based on GHG Protocol.
- Track emission progress, trends, and hotspots.
- Tap into over 10,000 global carbon factors.
- Effectively collect data and produce reports.

## Benefits

- Comply with regulatory reporting.
- Improve the organization's resiliency and sustainability through efficient carbon footprint management.
- Eliminate manual emissions calculations and data entry, freeing your sustainability team to focus on strategic goals and targets.



## About Archer

Archer is a pioneer in risk management delivering solutions for the heroes tasked with helping their organization deal with uncertainty. We enable better decision making with a technology platform to manage all types of risk. With more than 20 years of experience, Archer is solely dedicated to helping organizations manage risk, ensure compliance and meet emerging challenges such as ESG and operational resilience. Working with the largest pure risk management community globally with more than 1,200 customers of all sizes and industries, we help our customers not by building a wall around their business but by building a bridge to their next opportunity.

Visit [www.ArcherIRM.com](http://www.ArcherIRM.com).