

# Archer<sup>®</sup> Audit Planning & Quality

## Use Case for Audit Management

### The Challenge

One of the primary challenges for internal audit teams is lack of access to broad, dynamic enterprise risk and control information and analysis. Instead, they are left to rely on a static audit universe risk assessment (AURA) to evaluate risk and drive audit work. This prevents internal audit from adjusting their audit plans to rapidly changing risks and business concerns.

Audit plan and risk assessment documentation is often decentralized, captured in multiple tools and systems that are difficult to integrate. There is no easy, fluid way to manage audit plans, let alone coordinate objectives among risk and compliance groups. In addition, while internal audit teams are under increased pressure from audit committees and management to improve their processes, quality control procedures are often sporadic, inconsistent and difficult to follow up on.

### Overview

Archer<sup>®</sup> Audit Planning & Quality enables internal audit teams to define and risk assess their audit entities and universe, plan for audit engagements in upcoming periods, and manage their audit staff and schedule. Audit Planning & Quality integrates rich management risk and control information, enabling internal audit to ensure their audit objectives are aligned with enterprise risk management and other related groups. The use case puts you in control of the entire audit planning lifecycle, enabling improved governance of audit-related activities while also providing integration with your risk and control functions.

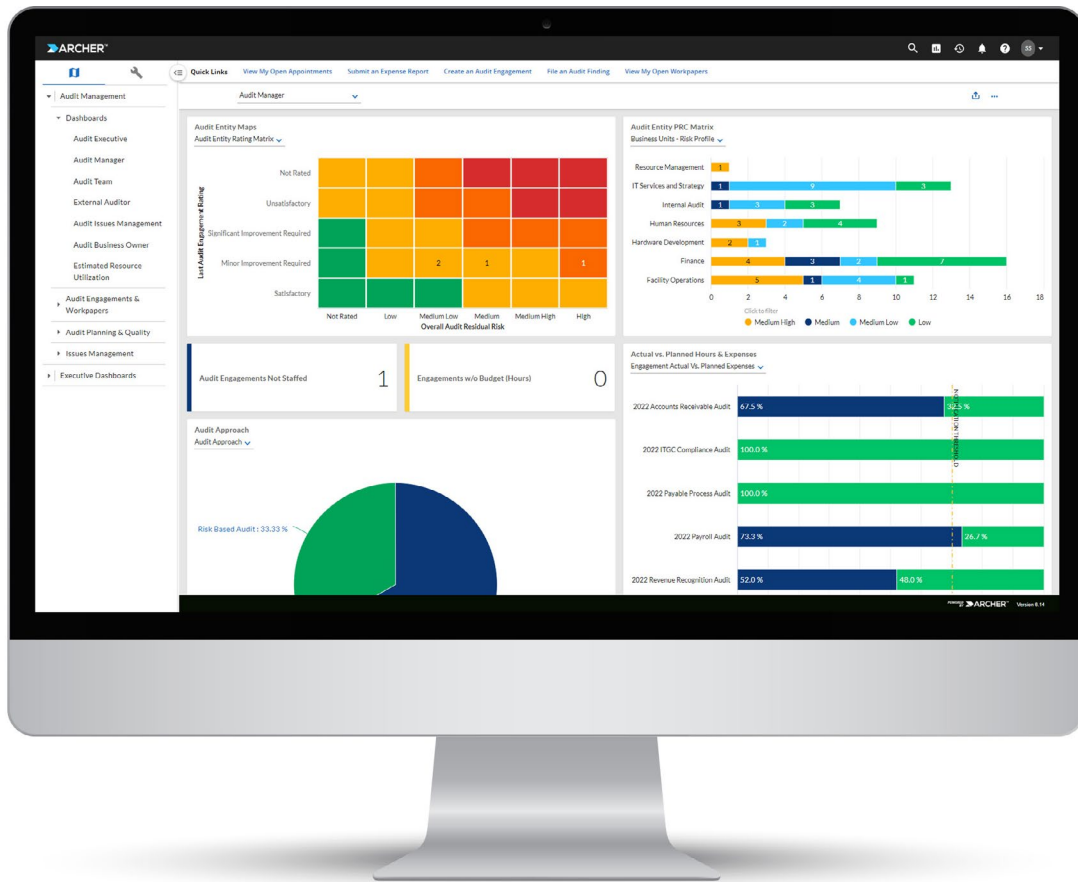
### Features

- Complete workflow to create and assess audit entities, perform risk assessments and manage audit plans.
- Workflow to manage your audit staff and scheduling of audits.
- Centralized location for storing and managing audit plans, audit entities, and assessment results.
- Audit quality assurance and review checklists.

### Benefits

With Archer Audit Planning & Quality, you can:

- Execute on a dynamic, risk-driven audit plan aligned with the organization's priorities and focuses on the most important risks.
- Easily provide Board-level reporting that keeps the audit committee well-informed of the status of audit plans, risk and critical findings.
- Demonstrate the strategic value of internal audit and more efficient use of audit resources.
- Reduce external auditor fees by providing self-serve access to the information they need.



## About Archer

Archer is a leading provider of integrated risk management (IRM) solutions that enable customers to improve strategic decision-making and operational resilience with a modern technology platform that supports qualitative and quantitative analysis driven by both business and IT impacts. As true pioneers in GRC software, Archer remains solely dedicated to helping customers manage risk and compliance domains, from traditional operational risk to emerging issues such as ESG. With over 20 years in the risk management industry, the Archer customer base represents one of the largest pure risk management communities globally, with more than 1,200 customers including more than 50% of the Fortune 500.

Visit [www.ArcherIRM.com](http://www.ArcherIRM.com).  @ArcherIRM  Archer Integrated Risk Management



©2023 Archer Technologies LLC. All rights reserved. Archer and the Archer logo are registered trademarks or trademarks of Archer Technologies LLC in the United States and other countries. All other trademarks are the property of their respective owners. Archer believes the information in this document is accurate. The information is subject to change without notice. 10/23 Data Sheet.