

Archer[®] Continuous Monitoring

Use Case for Public Sector Solutions

The Challenge

Security controls are infrequently and ineffectively assessed using tools from different vendors, with proprietary data formats and limited data sharing. There are typically more findings than the available staff can manage and remediation of findings is not prioritized using all available contextual data.

Continuous monitoring (CM) is a combination of manual and automated assessments. While vendors who produce automated scanner or sensor tools market their product as “continuous monitoring solutions,” they do not provide for manual assessments and typically check for only one defect type (vulnerability or misconfiguration). Updates to Federal Information Security Management Act (FISMA) and Office of Management and Budget (OMB) guidance create pressure to move CM planning forward, but lack of precedent leaves organizations guessing about finer implementation details.

Lack of CM in the public sector means defects and vulnerabilities remain open for long periods of time. It is also difficult to share data or the “big picture” of risk due to the disparity of tools and incomplete and outdated assessment results. Staffing is insufficient to perform all assessments and remediate all findings. Lack of business context and visibility means the most critical defects are not always remediated first. Most organizations do not have the insight and metrics to perform defect rankings, especially with consideration for information system criticality.

Overview

Archer[®] Continuous Monitoring serves as a hub for many types of scanners and sensors, allowing organizations to build an aggregate risk view at any level of the enterprise. At the lowest end, individual defects can be monitored and scored. Defects are aggregated at each level of the hierarchy, from the individual device up to the department level. In this way, a risk score can be designated at any level and the amount of relative risk introduced can be measured. This allows resources to be focused on the remediation efforts that will provide the greatest benefit.

Archer Continuous Monitoring enables faster, more targeted response to emerging risks. Staff can mitigate findings in the order in which they will most reduce risk. When used in tandem with the Archer Assessment & Authorization use case, Archer Continuous Monitoring enhances your FISMA, OMB and other regulatory compliance activities by verifying that information systems are abiding by authorization agreements and operating within acceptable levels of risk. This provides a more secure environment and more insight to make better, more informed risk decisions.

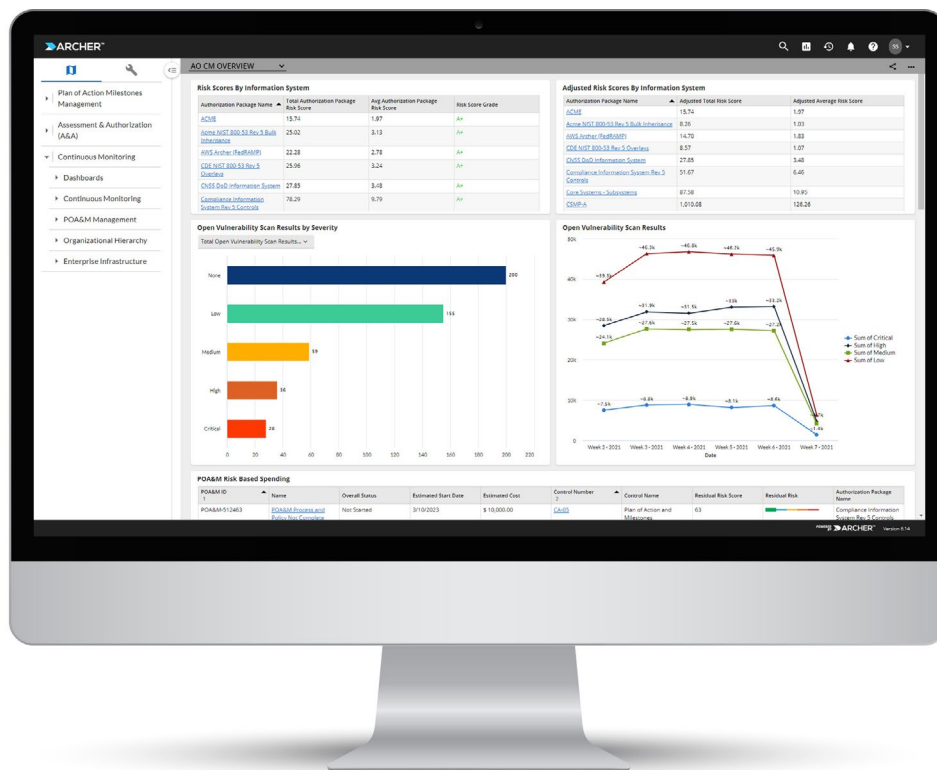
Features

- Current authoritative hardware and software inventories.
- Current defect libraries.
- Integration of scanners and sensors into a common environment, in a common format.
- Scoring and ranking algorithms for each defect, device and layer of the organizational hierarchy.
- Defect tracking and remediation.

Benefits

With Archer Continuous Monitoring, you can:

- Reduce exposure time.
- Reduce risk overall.
- Increase visibility/better decision-making.
- Access current risk data.
- Increase assurance and confidence based on current data.



About Archer

Archer is a pioneer in risk management delivering solutions for the heroes tasked with helping their organization deal with uncertainty. We enable better decision making with a technology platform to manage all types of risk. With more than 20 years of experience, Archer is solely dedicated to helping organizations manage risk, ensure compliance and meet emerging challenges such as ESG and operational resilience. Working with the largest pure risk management community globally with more than 1,200 customers of all sizes and industries, we help our customers not by building a wall around their business but by building a bridge to their next opportunity.

Visit www.ArcherIRM.com. @ArcherIRM Archer Integrated Risk Management

