

# Archer Evolv for Compliance

Ensuring an organization meets regulatory and risk requirements can be a formidable challenge. The complexity and volume of evolving regulations across industries and geographies can overwhelm even the most diligent compliance teams, making it difficult to prioritize and stay current with all requirements. Additionally, organizations must manage corporate policies alongside these regulations to ensure that internal policies align with external requirements while also addressing risks that go beyond regulatory drivers.

When organizations build risk and compliance programs from scratch, oftentimes there is information scattered throughout the organization with no central view of regulatory and non-regulatory obligations and policies. This fragmented approach, often relying on manual processes, disconnected documents, and niche tools, inevitably leads to inefficiencies, errors, and a lack of scalability. As businesses grow, these outdated methods become unsustainable, leaving organizations vulnerable to non-compliance, reputational damage, and financial penalties. The cost of non-compliance is stark, with \$10.5 billion in regulatory fines collected from financial institutions in 2023 alone. Despite significant investments, many organizations struggle to achieve the effectiveness and efficiency needed to manage risk, compliance, and corporate policies in today's dynamic environment.

## Deliver an Integrated and Strategic Approach to GRC

By building a strategy using transformative technology with an integrated approach to risk, compliance, and audit, you can overcome the data siloes and inefficiencies of manual processes. In doing so, GRC teams transform their role from a cost center and administrative burden to a strategic value driver.

## The Archer Evolv for Compliance Advantage

For over two decades, Archer has partnered with global organizations to tackle GRC complexities. Today's executives and boards demand streamlined, effective compliance strategies to mitigate risk and strengthen resilience. Archer Evolv for Compliance answers this call by offering a scalable, programmatic solution that seamlessly connects regulatory intelligence with risk assessments, control frameworks, and audit capabilities.

Key features of Archer Evolv for Compliance include:

- **Automated horizon scanning:** Leverages artificial intelligence (AI) to continuously monitor global regulatory changes, delivering only the most relevant updates.
- **Centralized obligations library:** Consolidates regulatory and non-regulatory requirements alongside corporate policies for comprehensive compliance visibility.
- **AI-powered gap analysis:** Detects control gaps and conflicts, providing actionable resolutions aligned with business objectives.

- **AI-powered gap analysis:** Detects control gaps and conflicts, providing actionable resolutions aligned with business objectives.
- **Integrated compliance workflows:** Automates regulatory change management to boost agility and responsiveness.
- **Comprehensive lifecycle management:** Oversees the entire lifecycle of regulatory changes, ensuring sustained alignment with business goals and industry standards.

Archer Evolv for Compliance monitors and responds to regulatory changes, creates a catalog of regulatory and non-regulatory requirements to provide clarity on all your organization's obligations, and establishes controls aligned with business requirements.

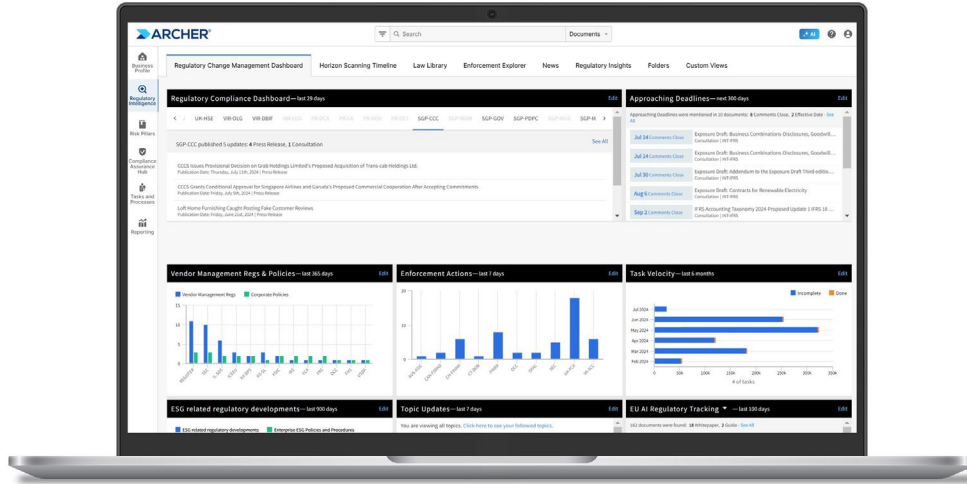
Archer Evolv for Compliance uses horizon scanning to automatically monitor global regulatory environments to stay on top of new and updated regulations and uses AI to filter and categorize content and deliver only relevant updates. You can ingest your corporate policies that you need to manage risk. Using AI, Archer Evolv for Compliance categorizes, parses, and versions the content to develop a centralized global regulatory and non-regulatory obligations library. Keeping regulatory obligations and corporate policies in a single library provides visibility of all your organization's commitments and ensures no obligations are overlooked.

Archer Evolv for Compliance allows you to manage the full lifecycle of regulatory changes by keeping up with the constantly changing regulations to ensure your compliance efforts are always aligned with business objectives and industry standards. The AI engine identifies gaps and conflicts and proposes resolutions, enabling you to establish controls that align with your business requirements and integrate with audit and compliance processes.

Archer Evolv for Compliance delivers measurable outcomes to help drive strategic growth for your business:

- **Noise reduction:** AI filters out irrelevant data, sharpening focus on impactful regulatory changes.
- **Risk mitigation:** Proactive gap analysis uncovers vulnerabilities and guides timely remediation.
- **Operational efficiency:** Streamlined workflows and control libraries enhance compliance agility.
- **Enhanced collaboration:** AI-driven insights strengthen cross-functional coordination and policy governance.
- **Scalable growth:** A centralized framework ensures compliance programs evolve seamlessly with organizational expansion.

Organizations leveraging Archer Evolv for Compliance not only mitigate risk but also transform compliance into a strategic advantage, driving long-term success in a complex regulatory landscape.



## About Archer

Archer is a pioneer in risk management delivering solutions for the heroes tasked with helping their organization deal with uncertainty. We enable better decision making with a technology platform to manage all types of risk. With more than 20 years of experience, Archer is solely dedicated to helping organizations manage risk, ensure compliance and meet emerging challenges such as ESG and operational resilience. Working with the largest pure risk management community globally with more than 1,200 customers of all sizes and industries, we help our customers not by building a wall around their business but by building a bridge to their next opportunity.

Visit [www.ArcherIRM.com](http://www.ArcherIRM.com).